



**RECORD OF TITLE
UNDER LAND TRANSFER ACT 2017
UNIT TITLE
Search Copy**




 R.W. Muir
 Registrar-General
 of Land

Identifier **360137**
Land Registration District **Wellington**
Date Issued 17 August 2007

Prior References
 347401

Supplementary Record Sheet
 360214

Estate Stratum in Freehold
Legal Description Unit 64 Deposited Plan 389729
Registered Owners
 Dory Limited

The above estates are subject to the reservations, restrictions, encumbrances, liens and interests noted below and on the relevant unit plan and supplementary record sheet

Statement of Passing Over Information

This information has been supplied by the vendor or the vendor's agents and Professionals, Redcoats Limited is merely passing over this information as supplied to us. We cannot guarantee its accuracy and reliability as we have not checked, audited, or reviewed the information and all intending purchasers are advised to conduct their own due diligence investigation into this information.

To the maximum extent permitted by law we do not accept any responsibility to any party for the accuracy or use of this information.

To Purchasers/Interested Parties:

A title shows evidence of events relating to a piece of real estate. A solicitor is the most appropriate person to examine a title. In accepting this title copy from Professionals, Redcoats Limited, you agree that this agency or any of its agents take no responsibility for interpreting it or for providing legal advice on anything out of the ordinary such as, but not limited to:

Caveat, Charging Order, Easement, Encumbrance, Instruments, Restrictive Covenant,
 Covenant, Cross Lease, Joint Tenancy, Tenancy in Common, Company Share

Often more than just the title needs to be searched. Cross Lease, Consent Notices, Easements, Instruments and other documents may place restrictions on use. You should take guidance from a solicitor.

SHT. 10F8 SHTS.

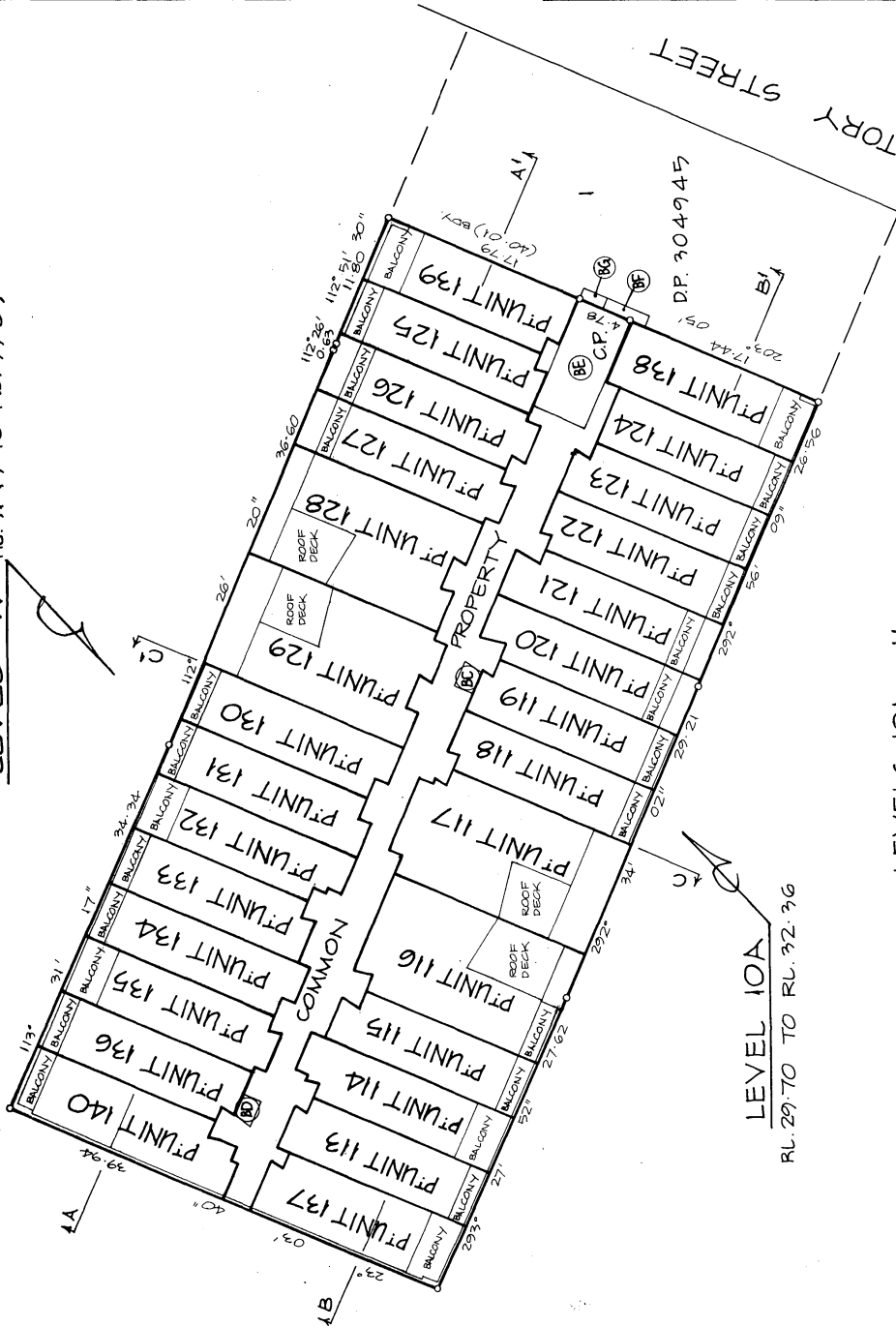
Register Only

1. NAME OF SOURCE ORGANIZATION: INFORMATION NEW ZEALAND

Approx 5 SHEET 5 OF 8 SHEETS



LEVEL 11 RL. 31.19 TO RL. 33.85



LEVEL 10A
RL. 29.70 TO RL. 32.36

LEVELS 10A & 11

LAND DISTRICT WELLINGTON

UNITS ON LOT 3 DP. 386772

TERRITORIAL AUTHORITY WELLINGTON CITY
Surveyed by WYNNE PATERSON LIMITED
Scale 1: 250 Date MARCH 2007

Total Area	Composed in	CT. 347401 (All)
<p>Russell Ian Paterson being a person entitled to practice as a licensed cadastral surveyor, certify that: a) The surveys to which this statement relates are accurate, and were undertaken by me or under my direction in accordance with the Cadastral Survey Act 2002 and the Surveyor-General's Rules for Cadastral Survey 2002; and b) This statement is accurate, and has been created in accordance with that Act and those Rules.</p>		
Signed	Date	12/1/2007
Field Book	Transverse Book	p
Reference Plans	SEE SHEET 1	
Examined	Correct	
Approved as to Survey by Land Information NZ on		
4/1/07		
Deposited by Land Information NZ on		
17/1/07		
File No. 15/5	DP	389729
RECEIVED 15/03/07		

4/1/07 5 OF 8 SHEETS

Register Only

Approved SHEET 7 OF 8 SHEETS

Note: * For schedule of Existing Apartmentment Easements see sheet 8.

Existing Easements		HEIGHT UNITS	
PURPOSE	SHOWN	SER. TEN	SPECIFIED IN
RIGHT TO DISCHARGE AIR	BC & BD	LOT 3 DP 386772	UPPER LOWER
RIGHT OF WAY	BB	21.99	20.15
	BA	22.95	20.15
	BE	33.90	22.95
RIGHT TO ATTACH VARIOUS FITTINGS & SWING CRANE	LOT 3 DP 386772	LOT 3 DP 386772	—

PROPERTY

NOTE: * THE UPPER LEVEL OF UNITS 125 - 136, 139 & 140 IS THE UNDERSIDE OF ROOFING & THIS LINE EXTENDED TO BDY.

COMMON																																																																																																																																							
UNIT 140	UNIT 136	UNIT 135	UNIT 134	UNIT 133	UNIT 132	UNIT 131	UNIT 130	UNIT 129	UNIT 128	UNIT 127	UNIT 126	UNIT 125	UNIT 124	UNIT 123	UNIT 122	UNIT 121	UNIT 120	UNIT 119	UNIT 118	UNIT 117	UNIT 116	UNIT 115	UNIT 114	UNIT 113	UNIT 112	UNIT 111	UNIT 110	UNIT 109	UNIT 108	UNIT 107	UNIT 106	UNIT 105	UNIT 104	UNIT 103	UNIT 102	UNIT 101	UNIT 99	UNIT 98	UNIT 97	UNIT 96	UNIT 95	UNIT 94	UNIT 93	UNIT 92	UNIT 91	UNIT 90	UNIT 89	UNIT 88	UNIT 87	UNIT 86	UNIT 85	UNIT 84	UNIT 83	UNIT 82	UNIT 81	UNIT 80	UNIT 79	UNIT 78	UNIT 77	UNIT 76	UNIT 75	UNIT 74	UNIT 73	UNIT 72	UNIT 71	UNIT 70	UNIT 69	UNIT 68	UNIT 67	UNIT 66	UNIT 65	UNIT 64	UNIT 63	UNIT 62	UNIT 61	UNIT 60	UNIT 59	UNIT 58	UNIT 57	UNIT 56	UNIT 55	UNIT 54	UNIT 53	UNIT 52	UNIT 51	UNIT 50	UNIT 49	UNIT 48	UNIT 47	UNIT 46	UNIT 45	UNIT 44	UNIT 43	UNIT 42	UNIT 41	UNIT 40	UNIT 39	UNIT 38	UNIT 37	UNIT 36	UNIT 35	UNIT 34	UNIT 33	UNIT 32	UNIT 31	UNIT 30	UNIT 29	UNIT 28	UNIT 27	UNIT 26	UNIT 25	UNIT 24	UNIT 23	UNIT 22	UNIT 21	UNIT 20	UNIT 19	UNIT 18	UNIT 17	UNIT 16	UNIT 15	UNIT 14	UNIT 13	UNIT 12	UNIT 11	UNIT 10	UNIT 9	UNIT 8	UNIT 7	UNIT 6	UNIT 5	UNIT 4	UNIT 3	UNIT 2	UNIT 1

SECTION A - A'

LAND DISTRICT WELLINGTON

UNITS ON LOT 3 DP 386772

Scale 1: 250 Date MARCH 2007

TERRITORIAL AUTHORITY WELLINGTON CITY

Surveyed by WYNNE PATERSON LIMITED

PROPERTY

NOTE: * THE UPPER LEVEL OF UNITS 113 - 124, 137 & 138 IS THE UNDERSIDE OF ROOFING & THIS LINE EXTENDED TO BOUNDARY

COMMON																																																																																																																																							
UNIT 137	UNIT 136	UNIT 135	UNIT 134	UNIT 133	UNIT 132	UNIT 131	UNIT 130	UNIT 129	UNIT 128	UNIT 127	UNIT 126	UNIT 125	UNIT 124	UNIT 123	UNIT 122	UNIT 121	UNIT 120	UNIT 119	UNIT 118	UNIT 117	UNIT 116	UNIT 115	UNIT 114	UNIT 113	UNIT 112	UNIT 111	UNIT 110	UNIT 109	UNIT 108	UNIT 107	UNIT 106	UNIT 105	UNIT 104	UNIT 103	UNIT 102	UNIT 101	UNIT 99	UNIT 98	UNIT 97	UNIT 96	UNIT 95	UNIT 94	UNIT 93	UNIT 92	UNIT 91	UNIT 90	UNIT 89	UNIT 88	UNIT 87	UNIT 86	UNIT 85	UNIT 84	UNIT 83	UNIT 82	UNIT 81	UNIT 80	UNIT 79	UNIT 78	UNIT 77	UNIT 76	UNIT 75	UNIT 74	UNIT 73	UNIT 72	UNIT 71	UNIT 70	UNIT 69	UNIT 68	UNIT 67	UNIT 66	UNIT 65	UNIT 64	UNIT 63	UNIT 62	UNIT 61	UNIT 60	UNIT 59	UNIT 58	UNIT 57	UNIT 56	UNIT 55	UNIT 54	UNIT 53	UNIT 52	UNIT 51	UNIT 50	UNIT 49	UNIT 48	UNIT 47	UNIT 46	UNIT 45	UNIT 44	UNIT 43	UNIT 42	UNIT 41	UNIT 40	UNIT 39	UNIT 38	UNIT 37	UNIT 36	UNIT 35	UNIT 34	UNIT 33	UNIT 32	UNIT 31	UNIT 30	UNIT 29	UNIT 28	UNIT 27	UNIT 26	UNIT 25	UNIT 24	UNIT 23	UNIT 22	UNIT 21	UNIT 20	UNIT 19	UNIT 18	UNIT 17	UNIT 16	UNIT 15	UNIT 14	UNIT 13	UNIT 12	UNIT 11	UNIT 10	UNIT 9	UNIT 8	UNIT 7	UNIT 6	UNIT 5	UNIT 4	UNIT 3	UNIT 2	UNIT 1

SECTION B - B'

[illegible]

**SUPPLEMENTARY RECORD SHEET
UNDER UNIT TITLES ACT 1972****Search Copy****Identifier****360214****Land Registration District****Wellington****Date Issued**

17 August 2007

Plan Number

DP 389729

Subdivision of

Lot 3 Deposited Plan 386772

Prior References

347401

Unit Titles Issued

360074	360075	360076	360077
360078	360079	360080	360081
360082	360083	360084	360085
360086	360087	360088	360089
360090	360091	360092	360093
360094	360095	360096	360097
360098	360099	360100	360101
360102	360103	360104	360105
360106	360107	360108	360109
360110	360111	360112	360113
360114	360115	360116	360117
360118	360119	360120	360121
360122	360123	360124	360125
360126	360127	360128	360129
360130	360131	360132	360133
360134	360135	360136	360137
360138	360139	360140	360141
360142	360143	360144	360145
360146	360147	360148	360149
360150	360151	360152	360153
360154	360155	360156	360157
360158	360159	360160	360161
360162	360163	360164	360165
360166	360167	360168	360169
360170	360171	360172	360173
360174	360175	360176	360177
360178	360179	360180	360181
360182	360183	360184	360185
360186	360187	360188	360189
360190	360191	360192	360193
360194	360195	360196	360197

Unit Titles Issued

360198	360199	360200	360201
360202	360203	360204	360205
360206	360207	360208	360209
360210	360211	360212	360213

Interests

OWNERSHIP OF COMMON PROPERTY

Pursuant to Section 47 Unit Titles Act 2010 -

(a) the body corporate owns the common property and

(b) the owners of all the units are beneficially entitled to the common property as tenants in common in shares proportional to the ownership interest (or proposed ownership interest) in respect of their respective units.

The above memorial has been added to Supplementary Record Sheets issued under the Unit Titles Act 1972 to give effect to Section 47 of the Unit Titles Act 2010.

For Area See DP 386772

Appurtenant hereto are right of way & right to convey electricity easements created by Transfer 5177787.7 - 20.3.2002 at 11:16 am

The easements created by Transfer 5177787.7 are subject to Section 243 (a) Resource Management Act 1991

Appurtenant hereto are right of support, right of way, pedestrian right of way, rights to drain water, drain sewage, convey water, swing a crane, gas, electricity, telecommunications, data & cable TV easements created by Easement Instrument 7506857.17 - 17.8.2007 at 9:00 am

Subject to right of way easements over parts marked BB, BA & BE, right to discharge air easement over parts marked BC & BD on DP 389729, right to attach various fittings & swing a crane over all the within land created by Easement Instrument 7506857.17 - 17.8.2007 at 9:00 am

Some of the easements created by Easement Instrument 7506857.17 are subject to Section 243 (a) Resource Management Act 1991

Land Covenant in Easement Instrument 7506857.18 - 17.8.2007 at 9:00 am

7524644.1 Change of rules of the Body Corporate - 30.8.2007 at 2:28 pm

9198857.1 Notice of change of body corporate operational rules pursuant to Section 106 Unit Titles Act 2010 - 2.10.2012 at 12:47 pm